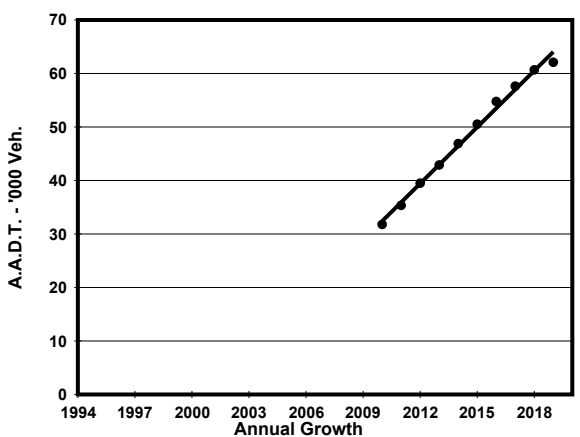
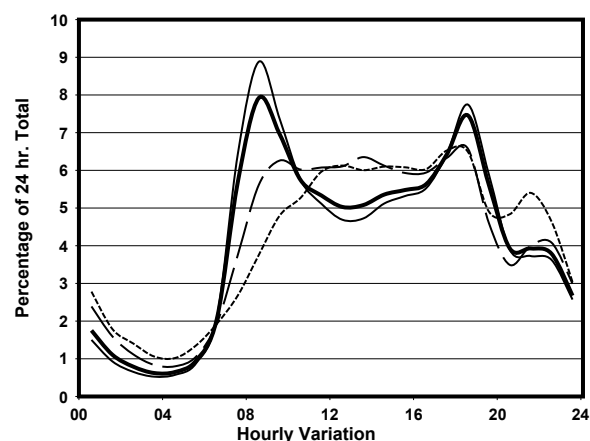
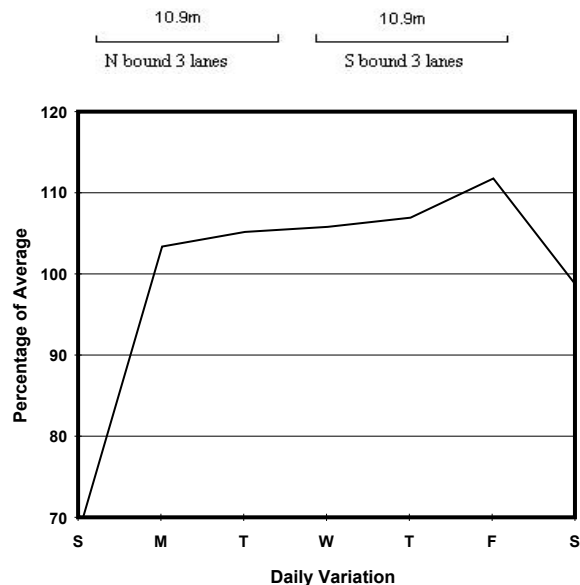
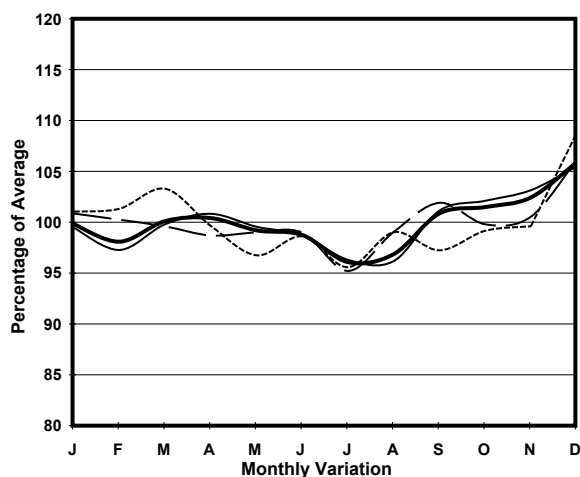


YEAR 2019

LINK EAGLE'S NEST TUNNEL (from TOLL PLAZA to SOUTH PORTAL)

CORE STATION 5037
ROAD NETWORK MAJOR
ROAD TYPE EXPRESSWAY

1. TRAFFIC FLOW VARIATION AND GROWTH



— All day - - - - - Mon.- Fri. Sat. - . - . - Sun.

2. TRAFFIC CHARACTERISTICS (BY DIRECTION)

Parameter	All - Day	Mon. - Fri.	Sat.	Sun.
SOUTH BOUND				
A.A.D.T.	30990	33590	31110	21650
R 12 / 24 - %	73.9	75	72.4	67.6
R 16 / 24 - %	89.6	90.4	87.5	86.1
AM Peak Hour	0800-0900	0800-0900	0900-1000	0900-1000
One-way flow at AM peak hour	2740	3350	2090	1120
T - % (AM)	-	11.3	-	-
PM Peak Hour	1800-1900	1800-1900	1800-1900	1800-1900
One-way flow at PM peak hour	2170	2410	2020	1430
T - % (PM)	-	12.4	-	-
Prop.of commercial vehicles - 16 hr.	-	14.8	-	-
NORTH BOUND				
A.A.D.T.	31110	33760	31140	21630
R 12 / 24 - %	70.3	71.2	69.8	64
R 16 / 24 - %	89.2	90.1	87	85.1
AM Peak Hour	0800-0900	0800-0900	0900-1000	0900-1000
One-way flow at AM peak hour	2180	2630	1810	960
T - % (AM)	-	18.8	-	-
PM Peak Hour	1800-1900	1800-1900	1800-1900	1700-1800
One-way flow at PM peak hour	2460	2810	2070	1400
T - % (PM)	-	9.5	-	-
Prop.of commercial vehicles - 16 hr.	-	15.6	-	-

3. OTHER INFORMATION AND COMMENT

4. Vehicle classification and occupancy - Monday to Friday

Time		Class of vehicle									
		Motor Cycle	Private Car	Taxi	Private LB	PLB	Goods veh.		Non Fr. Bus	Fr. Bus	
							Light	M & H		SD	DD
0700-0800	Pro	2.0	40.8	21.0	1.3	0.0	17.2	11.7	2.5	0.0	3.5
	Ocp	1.0	1.3	2.1	10.8	0.0	1.2	1.1	15.3	0.0	37.4
0800-0900 Peak hour	Pro	1.5	53.7	14.9	0.3	0.0	16.0	9.3	1.8	0.1	2.5
	Ocp	1.0	1.3	1.9	3.5	0.0	1.4	1.3	24.3	1.0	68.9
0900-1000	Pro	1.1	49.5	14.2	0.4	0.0	18.9	11.9	2.4	0.0	1.5
	Ocp	1.0	1.3	1.9	1.8	0.0	1.4	1.2	6.7	0.0	29.1
1000-1100	Pro	1.6	42.1	14.2	0.4	0.0	23.1	15.9	1.1	0.0	1.5
	Ocp	1.2	1.4	2.0	2.0	0.0	1.4	1.2	1.2	0.0	30.7
1100-1200	Pro	0.9	40.0	17.6	0.9	0.0	22.9	15.4	0.9	0.0	1.5
	Ocp	1.0	1.3	2.1	5.9	0.0	1.4	1.3	4.0	0.0	29.8
1200-1300	Pro	1.2	44.9	15.6	0.8	0.0	19.0	16.1	0.9	0.0	1.6
	Ocp	1.2	1.3	1.9	3.2	0.0	1.5	1.2	8.9	0.0	30.4
1300-1400	Pro	0.8	35.9	12.9	0.3	0.0	29.1	18.4	1.3	0.0	1.4
	Ocp	1.0	1.3	2.2	2.0	0.0	1.4	1.2	4.2	0.0	36.0
1400-1500	Pro	1.5	40.5	10.4	0.4	0.0	22.6	21.2	1.9	0.1	1.5
	Ocp	1.2	1.5	2.0	3.3	0.0	1.4	1.1	5.5	1.0	33.1
1500-1600	Pro	2.3	44.5	13.9	0.7	0.0	22.6	13.4	1.2	0.0	1.5
	Ocp	1.0	1.3	2.0	6.2	0.0	1.4	1.1	25.1	0.0	30.0
1600-1700	Pro	1.3	42.6	15.5	1.0	0.0	21.2	14.6	2.1	0.0	1.7
	Ocp	1.3	1.2	2.0	3.6	0.0	1.4	1.1	9.4	0.0	41.0
1700-1800	Pro	2.0	53.7	13.2	0.8	0.0	17.2	9.2	1.8	0.1	2.0
	Ocp	1.1	1.3	1.9	3.7	0.0	1.4	1.2	6.9	1.0	42.2
1800-1900	Pro	2.2	59.5	16.5	0.0	0.0	11.1	6.7	1.6	0.0	2.4
	Ocp	1.1	1.3	2.2	0.0	0.0	1.3	1.1	7.2	0.0	66.2
1900-2000	Pro	1.9	70.1	14.0	0.0	0.0	6.1	4.7	1.1	0.0	2.1
	Ocp	1.2	1.3	2.1	0.0	0.0	1.2	1.1	9.5	0.0	35.4
2000-2100	Pro	1.1	59.7	20.0	0.0	0.0	7.0	8.0	0.6	0.0	3.6
	Ocp	1.0	1.2	2.0	0.0	0.0	1.2	1.1	1.0	0.0	20.5
2100-2200	Pro	0.9	54.4	26.1	0.0	0.0	8.7	7.0	0.2	0.0	2.8
	Ocp	1.2	1.2	2.2	0.0	0.0	1.3	1.1	1.0	0.0	23.9
2200-2300	Pro	1.8	61.4	24.1	0.2	0.0	4.9	2.5	2.2	0.0	2.9
	Ocp	1.2	1.2	2.1	1.0	0.0	1.2	1.0	4.8	0.0	28.6
16 hours	Pro	1.5	49.9	16.0	0.5	0.0	16.9	11.5	1.6	0.1	2.1
	Ocp	1.1	1.3	2.1	5.0	0.0	1.4	1.2	10.3	1.0	39.7

Legend: Pro. Proportion of vehicles in % (Sum may not add up to 100% due to figure rounding)*

Ocp. Average occupancy of vehicles including both driver and passengers*

M&H Medium and Heavy

* All traffic data are collected from combined bounds